

**KIT PART NUMBER 1471337, 6230009, 6260014, 4300032**

*Operator's Guide  
1471337  
6230009  
6260014  
4300032*

**INSTRUCTIONS FOR INSTALLING A DEX/UCS INTERFACE BOARD IN A SNACK CENTER, HOT DRINK CENTER, EURODRINK, OR SHOPPERTRON**

**CHECK THE PARTS RECEIVED IN THE KIT WITH THE PARTS LIST IN THESE INSTRUCTIONS. IF ANY PARTS ARE MISSING, CONTACT NATIONAL VENDORS PARTS DEPARTMENT.**

Read these instructions carefully before installing the kit.  
Keep these instructions for part numbers and for future reference.

This kit contains the following:

INDEX	PART NUMBER	DESCRIPTION	QUANTITY PER KIT PART NUMBER			
			1471337	6230009	6260014	4300032
1	9989610	PCB ASSEMBLY - DEX/UCS INTERFACE	1	1	1	1
2	9989608	SPACER, PLASTIC .250 x .500	2	1	1	2
3	1451113	SCREW - 8-18 x 1.25 PHS TYPE B ZP	2	1	1	2
4	9989609	STANDOFF - DUAL LOCKING SUPPORT - .500	1	1	1	-
5	9989612	HARNESS - DEX/UCS 28"	-	1	1	1
	9989613	HARNESS - DEX/UCS - 48"	1	-	-	-
6	1471336	EPROM (RCE 147)	1	-	-	-
	6236037	EPROM (DEX HD 3.2)	-	1	-	-
	6266020	EPROM PUB/DEX	-	-	1	-
	4302648	EPROM (430-B2 or later)	-	-	-	1
7	4732024	"J" CLAMP	-	-	-	1
8	1471338	KIT INSTRUCTIONS	1	1	1	1
9	1470067	APPENDIX A FOR SNACK CENTER PROGRAMMING MANUAL	1	-	-	-
	6230016	APPENDIX F FOR HOT DRINK CENTER OPERATOR'S GUIDE	-	1	-	-
	6260020	APPENDIX D FOR EURODRINK OPERATOR'S GUIDE	-	-	1	-
	4300033	APPENDIX A FOR SHOPPERTRON SETUP GUIDE	-	-	-	1

**WARNING**

**Lethal voltages are present inside the merchandiser. Remove all electrical power from the merchandiser to avoid personal injury, death, or damage to equipment.**

1. Locate and follow the appropriate set of instructions for your machine.

## INSTRUCTIONS FOR INSTALLING A DEX/UCS INTERFACE BOARD IN A SNACK CENTER (MODEL NUMBERS 147/148/474)

Refer to figure 1.

1. Remove electrical power from the merchandiser.

### CAUTION

The EPROM is susceptible to static discharge damage. Wear a protective grounding wrist strap when handling microcircuits.

2. Remove the EPROM from the controller card. Install the new EPROM (6), as appropriate for your merchandiser.
3. Remove and discard two screws from the middle two holes of the controller card.

### HELPFUL HINT

To avoid losing parts, you may find it easier to tape or otherwise affix the spacers (2) in place before mounting the interface card.

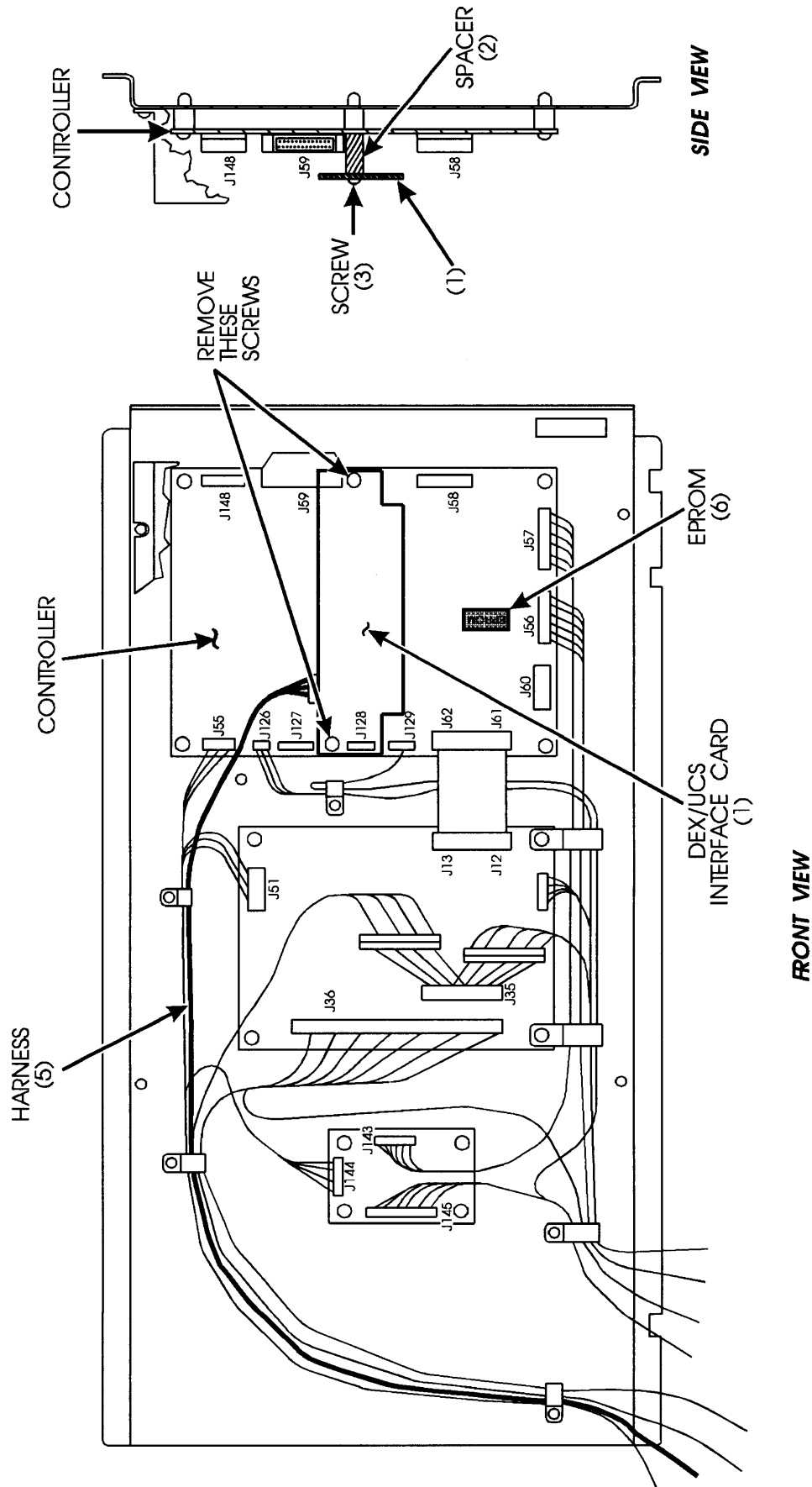
4. Install the DEX/UCS interface card (1) in the location shown: Line up the J128 header pins on the controller card with the socket on the interface card. Capture the spacers (2) between the interface card and the controller. Press the interface card down to mate J128 with the socket. **BE CAREFUL NOT TO STRESS THE STANDOFF PINS!**

### CAUTION

Be careful to support the interface card until it is firmly secured in place. Not supporting the card could result in stressing and breaking the header pins.

5. Secure the interface card with two new screws (3).
6. Plug the harness (5) into the interface card and route as shown. **DO NOT ROUTE THROUGH THE HEAT SINK AT THE TOP OF THE CONTROLLER CARD.** Tie the plug end of the harness up out of the way.
7. Restore power to the merchandiser.
8. Operate the merchandiser in accordance with the appendix (9).

**FIGURE 1. 147/148/474 INSTALLATION DIAGRAM**



# INSTRUCTIONS FOR INSTALLING A DEX/UCS INTERFACE BOARD IN A HOT DRINK CENTER (MODEL NUMBERS 623/625/627), AND A EURODRINK (MODEL NUMBERS 624/626)

Refer to figure 2.

1. Remove electrical power from the merchandiser.
2. Disconnect and remove the controller card from the merchandiser. If necessary, mark the wire harnesses to aid in reassembly.

## CAUTION

The EPROM is susceptible to static discharge damage. Wear a protective grounding wrist strap when handling microcircuits.

3. Remove the EPROM from the controller card. Install the new EPROM (6), as appropriate for your merchandiser.
4. Remove the standoff (9989329) from the left side of the controller card as shown.
5. Mount the new standoff (4) on the left side of the controller card by pressing it down through the mounting hole as shown until it snaps into place.

## HELPFUL HINT

To avoid losing parts, you may find it easier to tape or otherwise affix the spacer (2) in place before mounting the interface card.

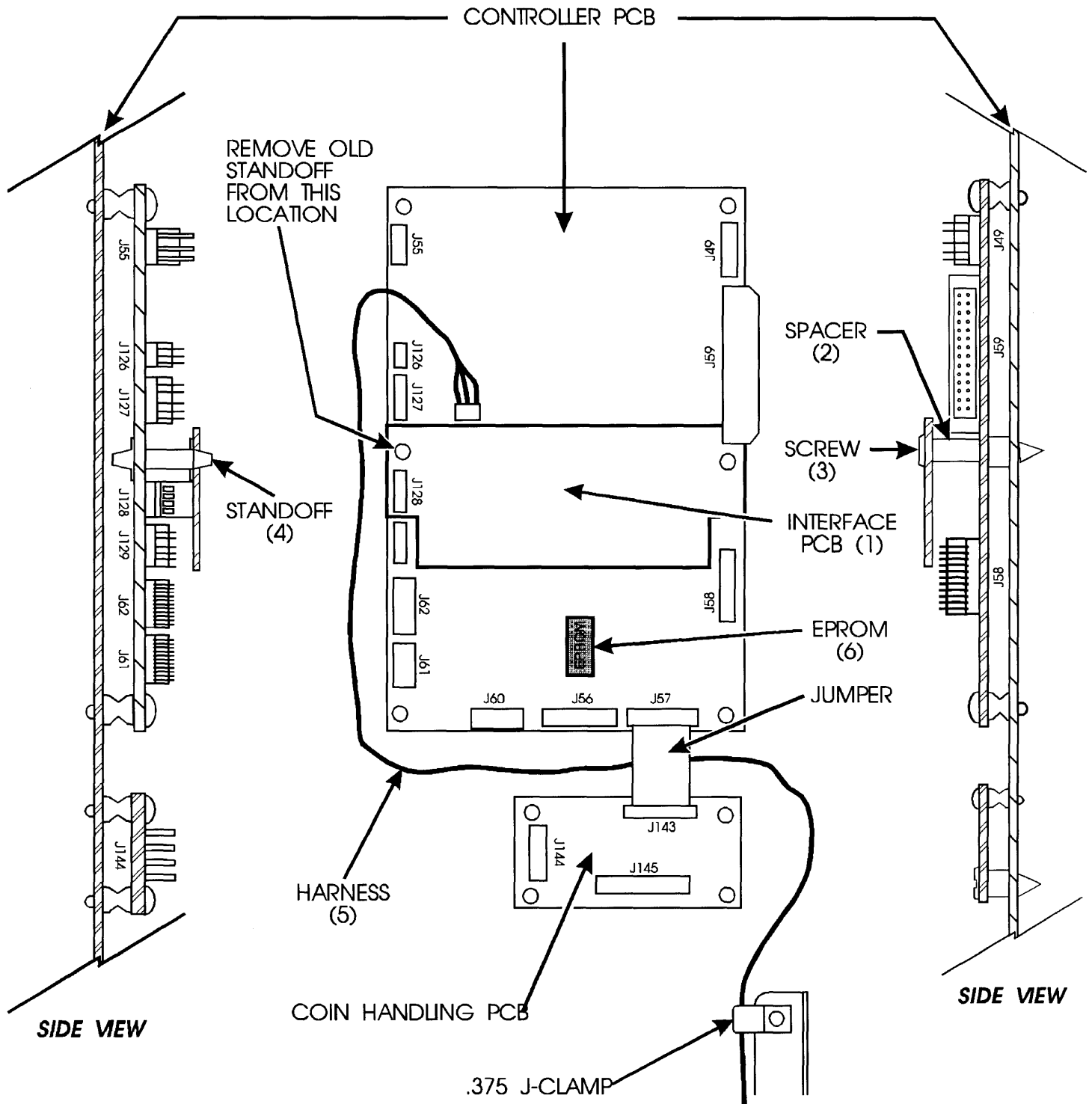
6. Install the DEX/UCS interface card (1) in the location shown: Line up the J128 header pins on the controller card with the socket on the interface card. Press the interface card down over the standoff (4) while mating J128 with the socket, until the standoff snaps into place. **BE CAREFUL NOT TO STRESS THE STANDOFF PINS!**
7. Replace the controller in the merchandiser:

## CAUTION

Be careful to support the interface card until it is firmly secured in place. Not supporting the card could result in stressing and breaking the header pins.

- a. Position the controller in the merchandiser.
  - b. Capture the spacer (2) between the controller and the interface card. Secure the interface card and controller with one new screw (3).
  - c. Finish securing the controller card with the screws you removed in step 2. You will have one screw left over, because of the new screw used in step b.
  - d. Connect the wire harnesses to the controller.
8. Plug the harness (5) into the interface card and route as shown. Tie the plug end of the harness up out of the way.
  9. Restore power to the merchandiser.
  10. Operate the merchandiser in accordance with the appendix (9).

**FIGURE 2. 623/624/625/626/627 INSTALLATION DIAGRAM**



# INSTRUCTIONS FOR INSTALLING A DEX/UCS INTERFACE BOARD IN A SHOPPERTRON (MODEL NUMBER 430)

Refer to figure 3.

1. Remove electrical power from the merchandiser.

### CAUTION

The EPROM is susceptible to static discharge damage. Wear a protective grounding wrist strap when handling microcircuits.

2. Remove the EPROM from the controller card. Install the new EPROM (6), as appropriate for your merchandiser.
3. Remove and discard two screws and one nylon clamp from the middle two holes of the controller card.

### HELPFUL HINT

To avoid losing parts, you may find it easier to tape or otherwise affix the spacers (2) in place before mounting the interface card.

4. Install the DEX/UCS interface card (1) in the location shown: Line up the J128 header pins on the controller card with the socket on the interface card. Capture the spacers (2) between the interface card and the controller. Press the interface card down to mate J128 with the socket. **BE CAREFUL NOT TO STRESS THE STANDOFF PINS!**

### CAUTION

Be careful to support the interface card until it is firmly secured in place. Not supporting the card could result in stressing and breaking the header pins.

5. Place the "J" clamp (7), facing down, on the left side of the interface card. Secure the interface card and the "J" clamp with two new screws (3).
6. Plug the harness (5) into the interface card and route as shown. **DO NOT ROUTE THROUGH THE HEAT SINK AT THE TOP OF THE CONTROLLER CARD.** Tie the plug end of the harness up out of the way.
7. Restore power to the merchandiser.
8. Operate the merchandiser in accordance with the appendix (9).

**FIGURE 3. 430 INSTALLATION DIAGRAM**

